



LIVERPOOL  
HOPE  
UNIVERSITY

1844

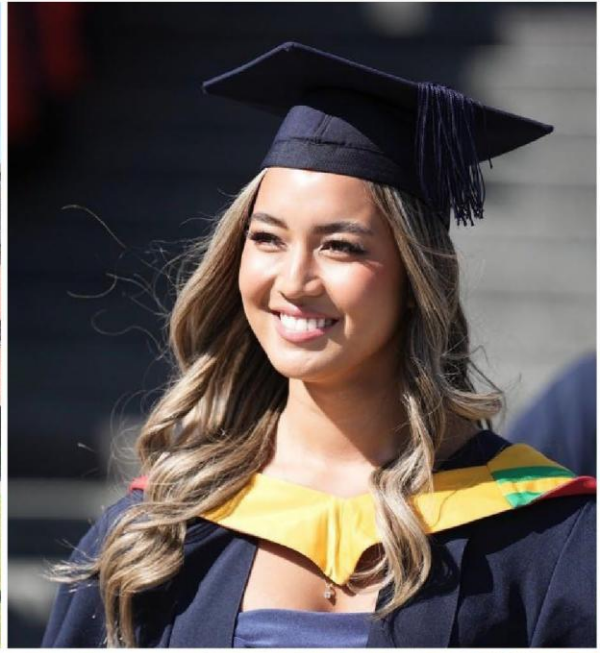
## Recruitment Pack

# Senior Lecturer (Teaching & Scholarship) Secondary Science

Job Reference: 2APGC09

Closing date: Tuesday 5<sup>th</sup> May 2026 at 5pm

[www.hope.ac.uk](http://www.hope.ac.uk)





**POST:** Senior Lecturer (Teaching and Scholarship) in Secondary Science

**STARTING DATE:** By arrangement during the summer term. Otherwise from 1st September 2026.

**SALARY RANGE:** £47,389 - £56,536 per annum

**TYPE OF CONTRACT:** Permanent

**WORK PATTERN:** Full Time (1.00 FTE)

**REPORTS TO:** Academic Lead for Secondary Education

---

## The Post

The School of Education at Liverpool Hope has a long history of training teachers, with well-established Partnerships across the North West. Teacher Education has been taking place since 1844. Our history of excellence in Teacher Education can be traced back to our three founding colleges who came together to form the unique ecumenical institution of Liverpool Hope University. We are a teaching institution with research embedded across all of our courses.

Building upon our successes, we are now seeking an experienced colleague to join us to make a major contribution to the development of the **Secondary Science PGCE** provision within the School. The role comprises teaching on the Science PGCE programme, further developing the research informed curriculum, providing pastoral support to trainees, contributing to recruitment activities, visiting trainees in Partnership schools and supporting school based mentors. The successful candidate will also demonstrate additionality and the capacity and desire to support wider aspects of the programmes.

As a highly-skilled professional, the person appointed will have a **strong subject expertise in physics, with the expectation to contribute and teach chemistry and biology too**. They will have the professional expertise and drive for training the next generation of Hope teachers and will also align with our values and commitment to social justice and inclusion. Recent experience in a professional context such as HEI, ITE curriculum development, school leadership, experience across multiple key stages, and the ability to offer additionality to the role would be beneficial. We are also looking for professionals who understand the importance of the university-school partnership and will be skilled in strengthening relationships with schools.

We are looking for an individual who will bring enthusiasm and a sense of vocation for their chosen subject and profession, with demonstrable successful experience in an educational context. You will be supported to develop fully as a leading Teacher Educator; this will include training and professional development. Bringing substantial, recent, and relevant professional experience, which may be within HE, you will be looking for an opportunity to work with others to ensure that Hope ECTs and graduates continue to be effective, reflective, fully informed, and committed curriculum shapers of the future.

**The post is permanent so we are keen to recruit somebody who complements our established and dedicated Secondary team.**

We recruit staff nationally and internationally as we seek out the best to help build Hope for the future. If you join us you will be doing so at an exciting and challenging time as we work to build a liberal arts inspired university of distinction in the UK. If you have the drive and commitment to assist in this task, we would be delighted to hear from you.

**Candidates should have a profile in line with criteria outlined in the Person Specification.**

---

## Requirement for Academic Qualifications

The individual must, at the least, be the holder of an undergraduate degree in a relevant subject and hold Qualified Teacher Status. A Master's degree and/or doctorate are desirable.

---

## Requirement for FHEA or equivalent

The University expects that the post holder will have FHEA status or willingness to obtain such. This may be set as a probationary target and colleagues will be offered full support to achieve this.

---

## Job Description/Key Duties of the Post

The academic Role Profiles for Senior Lecturer (Teaching and Scholarship) gives further guidance regarding the level of activity required at these grades at Hope. Below is a broad indication of typical key duties.

This Job Description is a guide to the work you will initially be required to undertake. It may be changed from time to time as circumstances require. It does not form part of your Contract of Employment.

**Pedagogic work**, including

- a. Teaching/lecturing, tutorial and seminar work;
- b. Setting and marking of assessments.
- c. Supervision of independent research projects and groupwork projects
- d. Fieldwork

### **Curriculum development, including**

- a. Planning, development and evaluation of courses and course materials

### **Student support and Pastoral care**

- a. As appropriate to the mission of the University, with a particular focus on student achievement and retention
- b. Undertake the role of the Personal and Academic Tutor

### **Scholarship and Research**

- a. Conduct scholarship in own subject area (i.e. keep up to date with subject literature, particularly in the area of subject-specific pedagogy);
- b. Ensure that teaching materials remain fresh and reflect current professional practice and standards in the area of professional expertise;
- c. Continually update knowledge and understanding in field or specialism;
- d. Undertake professional development in area of expertise;
- e. Where opportunity exists and requested to do so by the University,
- f. Undertake further study towards a higher qualification in either subject area or area professional expertise;

### **Staff development activities, including**

- a. Participation in annual staff performance review;
- b. Participation in the School's peer monitoring activity; and
- c. Participation in other developmental activities, as arranged by the Head of School

### **Administration**

- a. Which may include responsibilities relating to promoting the Department, publicity, public relations, marketing, recruitment and admissions of students;
  - b. Responsibilities around quality control, including liaising with external examiners; and
  - c. Serving on internal/external committees or other bodies
-

## Name of contact for queries

Ms Yvonne Ward  
Academic Lead for Secondary Education  
Email: [wardy@hope.ac.uk](mailto:wardy@hope.ac.uk)

---

## Conditions of service:

This post is based at Hope Park campus. However, you may be required to work in other areas of the University as and when required.

The post is permanent, subject to the normal probationary period of 12 months.

Salary scale for this post is £47,389 - £56,535 (grade 8) per annum. New appointments will normally be made on the first incremental point of the advertised grade within the salary scale. In certain circumstances, it may be appropriate to offer a candidate a higher incremental point of the advertised grade. A higher salary will not be offered purely on the fact that it has been requested. Any starting salary above the first incremental point of the advertised grade must be justified and **supported by evidence**. Salary is payable monthly in arrears by bank giro credit on and around the 20<sup>th</sup> of each month.

The annual leave runs from 1st September to 31st August. Holiday entitlement is 35 days per year plus statutory Public Holidays and Liturgical days. This entitlement is pro-rated for part-time staff.

---

## Further Information

Liverpool Hope University has two main teaching campuses – Hope Park in the Liverpool suburb of Childwall and the city centre Creative Campus.

We have invested more than £60 million in buildings and equipment over the past eight years and we are proud of our campuses. Stunning listed buildings sit alongside modern architecture, and with beautiful gardens and facilities, which make Liverpool Hope University a unique place to work and study.

## Mission and Values

Liverpool Hope University is an ecumenical Christian Foundation, which strives:

- to provide opportunities for the well-rounded personal development of Christians and students from other faiths and beliefs, educating the whole person in mind, body and spirit, irrespective of age, social or ethnic origins or physical capacity, including in particular those who might otherwise not have had an opportunity to enter higher education;
- to be a national provider of a wide range of high-quality programmes responsive to the needs of students, including the education, training and professional development of teachers for Church and state schools;

- to sustain an academic community, as a sign of hope, enriched by Christian values and worship, which supports teaching and learning, scholarship and research, encourages the understanding of Christian and other faiths and beliefs and promotes religious and social harmony;
- to contribute to the educational, religious, cultural, social and economic life of Liverpool, Merseyside, the North-West and beyond.

## **Liverpool Hope's Values**

Hope strives to meet the following values, which are integral to the fulfilment of its Mission:

- be open, accessible and inclusive,
- take faith seriously, being fully Anglican, fully Catholic, fully ecumenical, fully open to those of all faiths and beliefs,
- be intellectually stretching, stimulating, challenging,
- be hospitable, welcoming, cheerful, professional, full of Hope; creating supportive communities in aesthetically pleasing environments,
- be well-rounded, holistic, integrated, a team, a community of communities, collaborating in wider partnerships.

## **Equality and Diversity**

Consistent with its Mission, Liverpool Hope strives to be a University where the individual and individuality matter. We hold students, staff and visitors in high regard and we seek to foster a working and learning environment that recognises and respects difference. All staff are expected to comply with the University's Equality and Diversity policies in the performance of their duties.

## **Health and Safety**

Liverpool Hope University is committed to ensuring the health, safety and welfare of all staff at work and of students, visitors and others by continuous improvement in standards of health and safety. All staff are expected to comply with the University's Health and Safety policies in the performance of their duties

## **Sustainability**

Liverpool Hope University is committed to enhancing the quality of its environment for its staff and students working and living at the University and the wider community; and aims to manage its operations in ways that are environmentally sustainable, economically feasible and socially responsible. All staff are expected to work in accordance with, and promote the University's sustainability practices.

---

## Benefits of working at Liverpool Hope University

Liverpool Hope offers its employees a full range of benefits:

### Pay and Pensions

- Competitive rates of pay defined using the HERA job evaluation scheme
- Pension schemes with generous employer contributions

### Home and Family

- Generous Annual Leave Arrangement
- Opportunity for flexible working arrangements

### Training and Development

- Induction training for all new staff
- Opportunities to participate in overseas exchange with Erasmus Staff Mobility
- Staff development opportunities

### Health and Well-Being

- Hope Park Sports fitness suite and classes with discounted membership
- A range of food outlets with healthy eating options
- Staff counselling service
- Staff cycle scheme
- Support with lifestyle changes
- A range of social activities and groups
- On-site chapel, multi-faith prayer room and Chaplaincy
- Eye testing scheme

We also provide a variety of staff discounts ranging from reduced price Theatre tickets to discounts on beauty treatments.

### Library services

Liverpool Hope's Library Service provides access to a wide-ranging collection of physical and online resources to support learning and research. The service also provides different types of study space across both campuses to support the wide range of learning styles and needs, from individual study rooms to group spaces, and from silent study to more relaxed social learning

### Car Parking

All users of University car parks are required to pay for their use. The University has a scalable charging system for annual permits and pay and display facilities for occasional users.

---

## How to apply

You can download the application form by the link below:

<https://www.hope.ac.uk/aboutus/jobopportunities/howtoapply/>

## Useful Links

<https://www.hope.ac.uk/lifeathope/>

<https://www.hope.ac.uk/aboutus/jobopportunities>

<http://www.hope.ac.uk/gateway/staff/staffdevelopment/newinternationalstaff>

